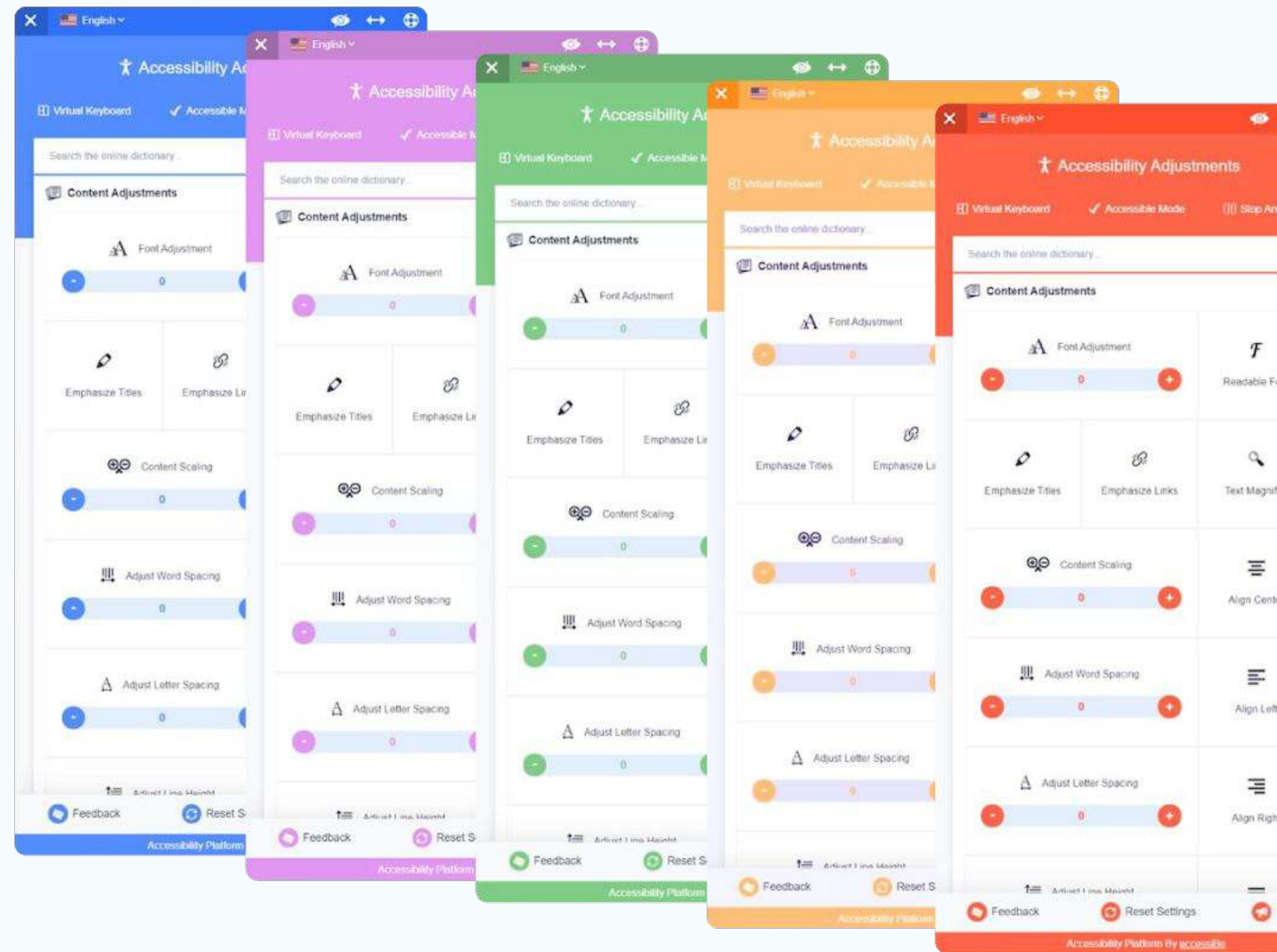


Our ADA Compliance Solution

Presentation Topics

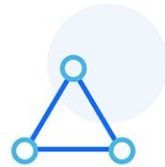
- Web accessibility & ADA compliance
- Solution overview
- Features explanation



“Web accessibility is a set of rules, behaviors, code standards and design guidelines, that are meant to allow people with disabilities to effectively use websites”



Blindness



Motor & Mobility



Color Blindness



Epilepsy



Blurred Vision



Cognitive Disorders



Aging



Cataracts & More



CVAA, RGAA, ATAG, AUDA, AODA, UNE 139803:2012, JIS X 8341 & more...

- ✓ Compliance Requirement to meet the WCAG 2.1
- ✓ Explains all the adjustments the website has undergone
- ✓ Doubles as a certification of performance
- ✓ Proof of doing the required compliance work
- ✓ Sent over email and displayed within the interface

Print / Download 02/08/2019

Accessibility Statement

Date: 02/08/2019 **Domain:** example-domain.com

Conformance Status

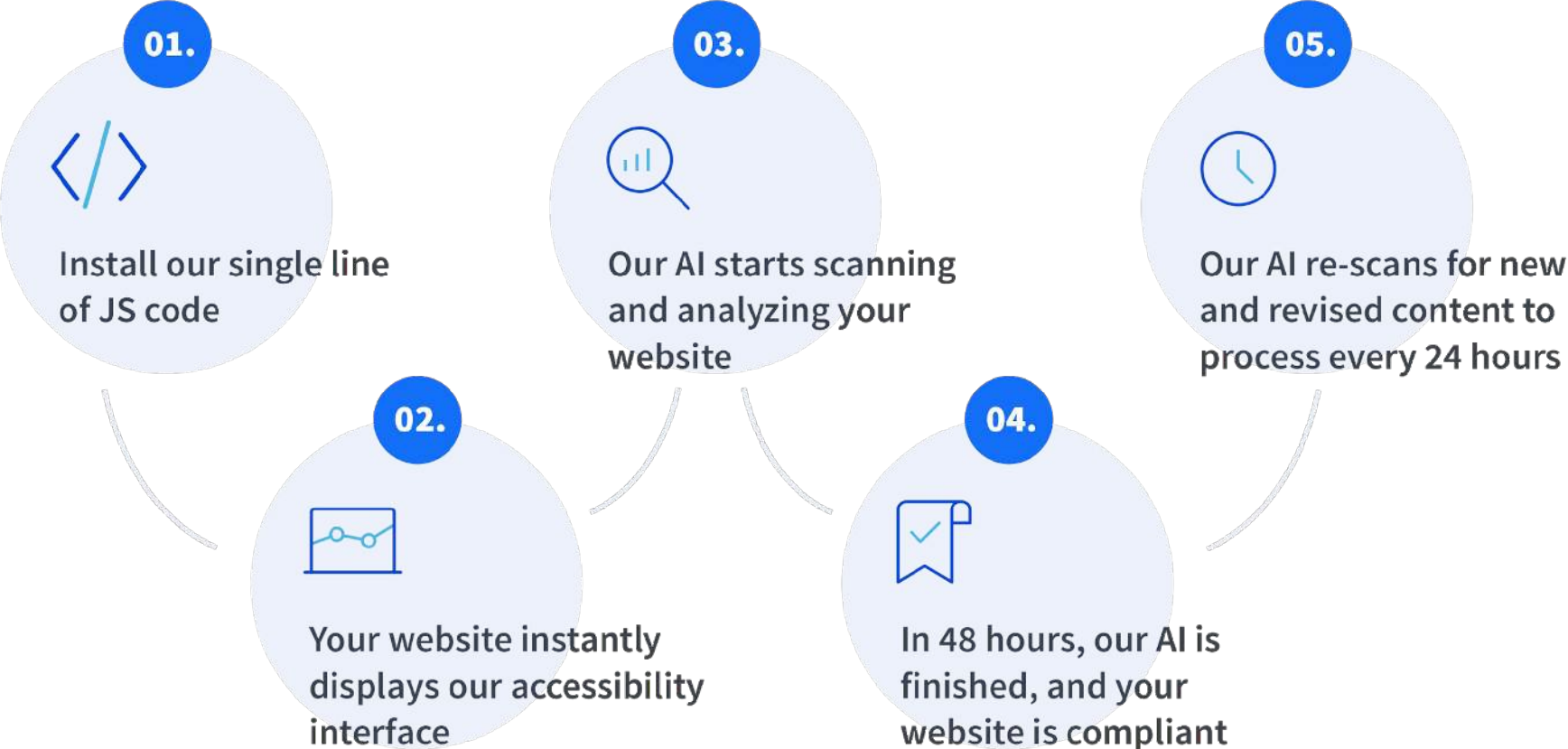
We firmly believe that the internet should be available and accessible to anyone, and are committed to providing a website that is accessible to the widest possible audience, regardless of circumstance and ability.

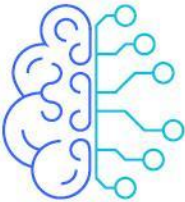
To fulfill this promise, we aim to adhere as closely as possible to the Web Content Accessibility Guidelines 2.1 (WCAG 2.1) at the AA level, published by the World Wide Web Consortium (W3C). These guidelines explain how to make web content more accessible to people with a wide array of disabilities. Complying with those guidelines helps us provide a site that is accessible to all people, from the blind to the motor impaired.

This website utilizes various technologies all meant to make it more accessible. We utilize an interface that allows persons with specific disabilities to adjust the website's UI (user interface) and design it to their personal needs. This interface replaces the older fashioned method of providing all users with the same, lesser but accessible design or user interface.

Here are some of the interface's capabilities:

- Font handling** - users can increase and decrease its size, change its family (type), adjust spacing, alignment, line height, and more.
- Color handling** - users can select various color contrast profiles such as light, dark, inverted and monochrome. Additionally, users can swap color schemes of titles, texts, and backgrounds, with over 7 different coloring options.





AI Application

Keyboard navigation and screen readers optimization

Accessibility Interface

UI, design and cognitive related adjustments

- WI-ARIA
- ALT TAGS
- POPUPS
- ICONS
- FORMS
- DROPDOWNS
- WIDGETS
- BUTTONS

- COLORS
- CURSORS
- FONTS
- CONTRAST
- SIZES
- ONLINE GLOSSARY
- VIRTUAL KEYBOARD
- STOP ANIMATIONS